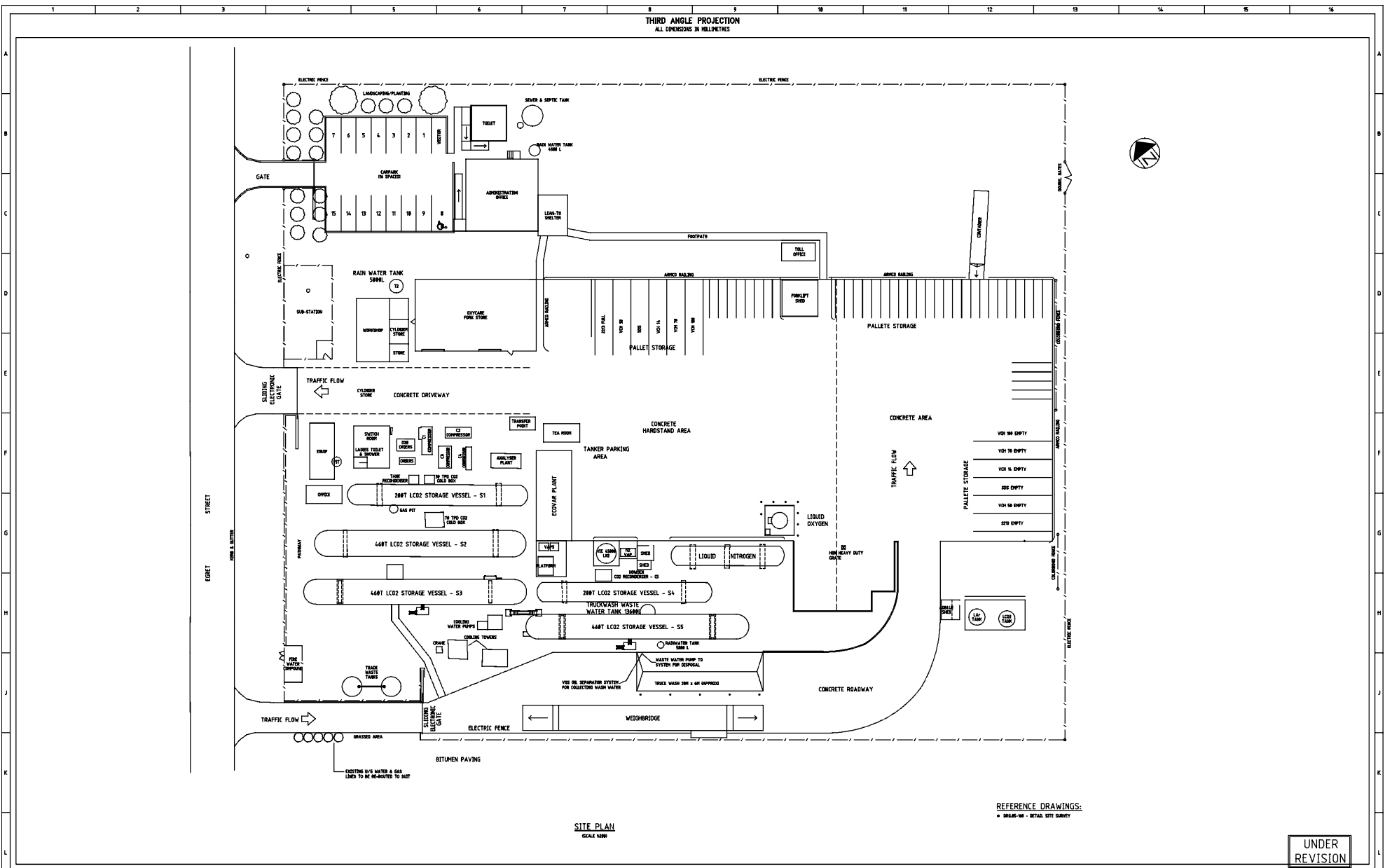


THIRD ANGLE PROJECTION
ALL DIMENSIONS IN MILLIMETRES



SITE PLAN
SCALE 1:200

REFERENCE DRAWINGS:
• 05645-00 - RETAIL SITE SURVEY

UNDER REVISION

REV.	DATE	DRAWN	REVISIONS	PASSED	APPROVED	REV.	DATE	DRAWN	REVISIONS	PASSED	APPROVED
1	23-5-16	JAM	UPDATED POST SITE WALK IRRR/JAM								
2	23-2-16	BNR	STORAGE TANKS S3 & S5 ADDED								
3	24-4-12	JT	NEW CO2 & ARGON VESSEL COMPOUND ADDED AT HD.								
4	8-10-17	JT	UNDER REVISION								

PROJECT 3023 SCALE 1:200

10 JULIUS AVENUE, NORTH RYDE, NSW 2113
COPYRIGHT BOC LIMITED 2004

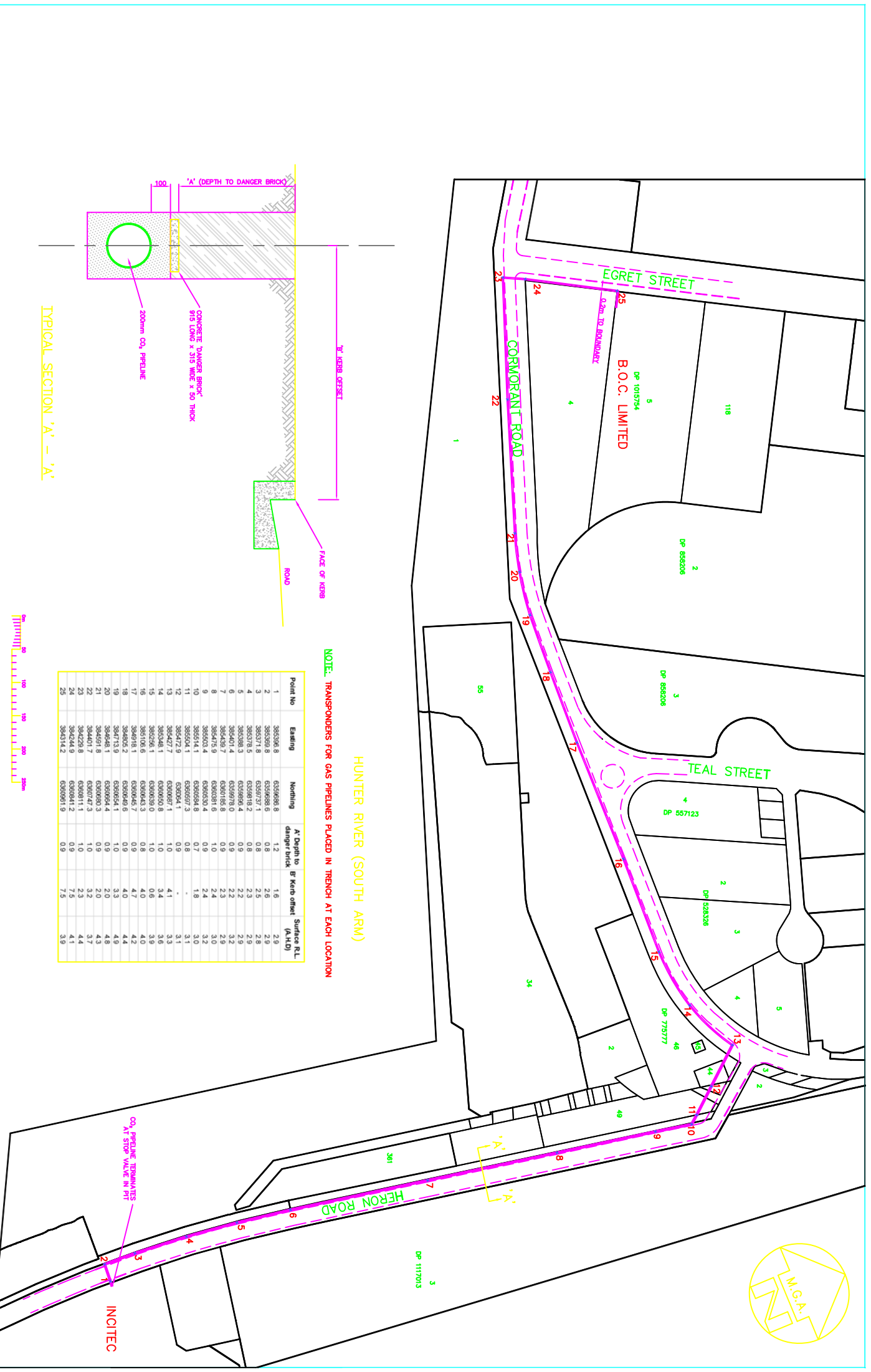
LAYOUT - SITE

GENERAL
KOORAGANG ISLAND NSW

AD FORM NO DEP-492-FR/14
DRAWING NO B400-2
SHEET 1
VERSION 1

NOTES:
 1. IT IS RECOMMENDED THE POSITION AND DEPTHS OF ALL SERVICES BE VERIFIED ON SITE, PRIOR TO ANY EXCAVATION WORK.
 2. EACH SERVICE BOUNDARY ON UNPAVED AREAS SHOULD BE UNDERWRITTEN PROMINENTLY.
 3. ACCURATE BOUNDARY POSITIONS ARE TO BE DETERMINED ON SITE PRIOR TO ANY WORK.
 4. DATUM OF LEVELS IS AUSTRALIAN HEIGHT DATUM (AHD). SOURCE OF LEVELS IS SSN 35683
 5. COORDINATES ARE GDA94 AND 9803.

PARKER SCANLON
PTY LTD
 Surveying Engineering Town Planning and Project Management
 Level 1/68 Bedford Street BROADMEADOW • PO Box 187 BROADMEADOW NSW 2292
 Ph: 4969 0989 fax: 4969 6937 • Email: survey@parker-scscanlon.com.au • ABN 30124 021 022
 www.parker-scscanlon.com.au



NOTE: TRANSPIRENDERS FOR GAS PIPELINES PLACED IN TRENCH AT EACH LOCATION

Point No	Ending	Nothing	A' Depth to danger strick	B' Kerb offset	Surface RL (AHD)
1	396398.8	6306988.8	1.2	1.6	2.9
2	396398.8	6306988.8	0.8	2.0	2.8
3	396397.8	6306978.7	0.8	2.0	2.8
4	396397.5	6306981.2	0.8	2.0	2.9
5	396398.3	6306986.4	0.9	2.2	2.9
6	396401.4	6306978.0	0.9	2.2	3.2
7	396403.7	6306985.8	0.9	2.3	2.9
8	396407.9	6306981.6	1.0	2.4	3.0
9	396403.4	6306930.4	0.9	2.4	3.2
10	396514.1	6306964.8	0.7	1.8	3.0
11	396504.1	6306971.3	0.8	-	3.1
12	396498.4	6306981.1	0.8	-	3.1
13	396407.7	6306987.1	1.0	4.1	3.3
14	396348.1	6306950.8	1.0	3.4	3.6
15	396356.1	6306938.0	1.0	0.6	3.9
16	396108.6	6306943.3	0.8	4.0	4.0
17	394918.1	6306946.7	0.9	4.7	4.2
18	394805.2	6306946.6	0.9	4.0	4.4
19	394713.9	6306954.1	1.0	3.3	4.9
20	394668.1	6306954.4	0.9	2.0	4.8
21	394651.9	6306953.3	0.9	2.0	3.3
22	394644.9	6306952.4	1.0	2.5	3.3
23	394229.8	6306911.1	1.0	2.5	4.4
24	394244.9	6306941.2	0.9	7.5	4.1
25	394314.2	6306961.9	0.9	7.5	3.9

HUNTER RIVER (SOUTH ARM)
NOTE: TRANSPIRENDERS FOR GAS PIPELINES PLACED IN TRENCH AT EACH LOCATION

